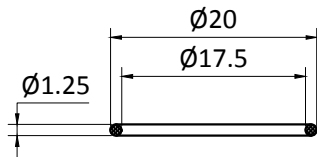
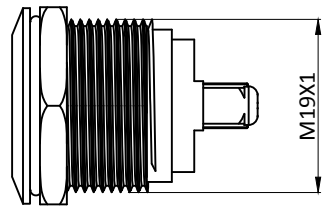
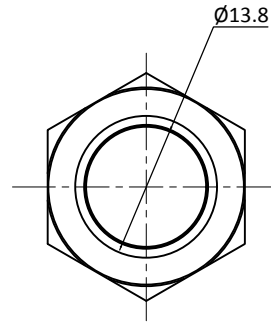
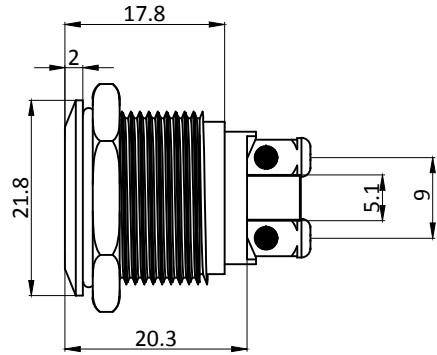
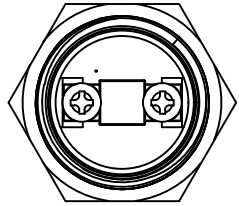
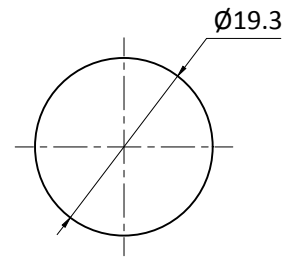


S19-170-X



"O"RING



Install size / Bohrbild

Rating / Schalteistung: 3A 250VAC
 Contact Resistance / Kontaktwiderstand: 50mΩ MAX
 Insulation Resistance / Isolationswiderstand: 100Ω min at 500VDC
 Dielectric Strength / Spannungsfestigkeit: 1000VAC rms.
 Electrical Life / Elektronische Lebensdauer: 100,000 Operations
 Operating Temperature / Betriebstemperatur: -25 °C - +55 °C
 Protection Grade / Schutzklasse: IP67
 Soldering / Löttemperatur: 300°C max. for 5 seconds
 Material:
 Body / Gehäuse: Stainless Steel 304
 Button / Drucktaste: Stainless Steel 316
 Terminal / Anschluss: Screw Terminal

| | | |
|------------------------------|----------------------|------------------|
| Lampenart / | Lamp Type | LED lamp (AC/DC) |
| Nennspannung / Rated Voltage | | 6-24VAC/DC |
| LED Farbe / | LED Color | R G Y B W |
| Lebensdauer / | Life | 40000hours |
| Schaltbild / | Lamp Circuit Diagram | |

| | | | | |
|--|--|--|--|--|
| | | | | |
| | | | | |
| | | | | |
| | | | | |