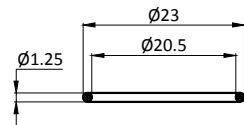
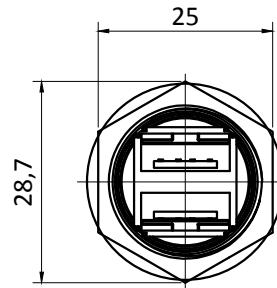
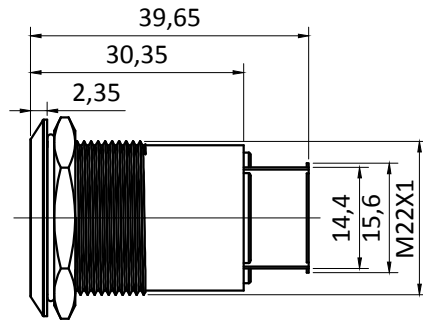
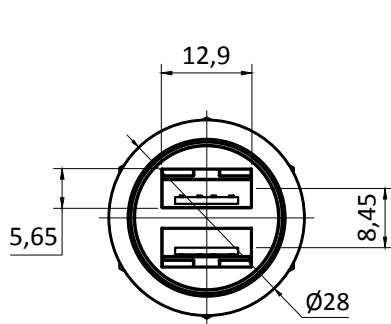
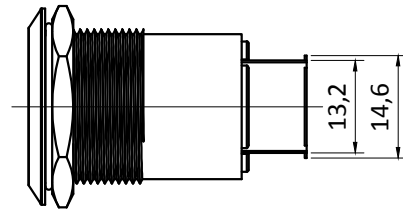
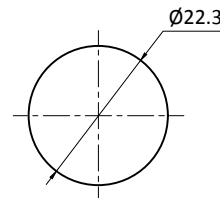


C22-USB2-2



"O"RING



Install size / Bohrbild

Specification of Dual Port USB interface:

1. MATERIAL SPECIFICATION:

- 1) HOUSING MATERIAL: WHITE PBT ROHS.
- 2) SHELL MATERIAL: SPCC T: 0.30mm PLATING NICKEL.
- 3) BACK COVER MATERIAL: SPCC T: 0.30mm PLATING NICKEL.
- 4) SHRAPNEL MATERIAL: C2680. T: 0.30mm PLATING NICKEL.
- 5) TERMINAL: C2680 T: 0.25mm PLATING: SEMI GOLD TIN G/F.

2. ELECTRICAL CHARACTERISTIC:

- 1) VOLTAGE CURRENT RATING: 1AMP, 30V DC;
- 2) INSULATION RESISTANCE: 1000MΩ MIN;
- 3) CONTACT RESISTANCE: 30mΩ MAX;
- 4) WITHSTANDING VOLTAGE: 500V AC;

3. MECHANICAL:

- 1) MATING FORCE: 3.57 KG MAX
- 2) UNMATING FORCE: 0.7 KG MIN.
- 3) GREATER THAN OR EQUAL TO 6N AFTER LIFE TEST.

operating Temperature: -25 ° C - +55 ° C

Soldering / Löttemperatur: 300 ° C max. for 5 seconds

Material:

Body / Gehäuse: Stainless Steel 304
