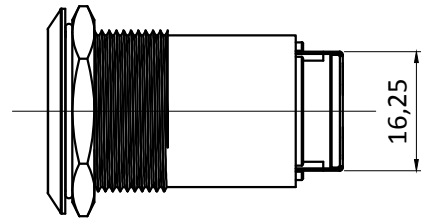


C22-RJ45



RJ45 interface specification:

1. RJ Electrical Characteristics

1-1: Voltage: 150V AC RMS

1-2: Current Rating: 1.5A

1-3: Contact Resistance: 40mΩ MAX

1-4: Insulation Resistance: 500mΩ MIN

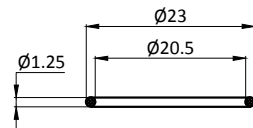
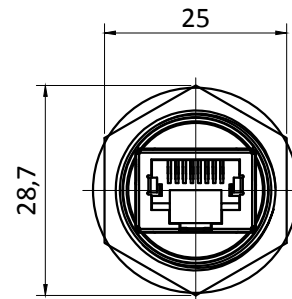
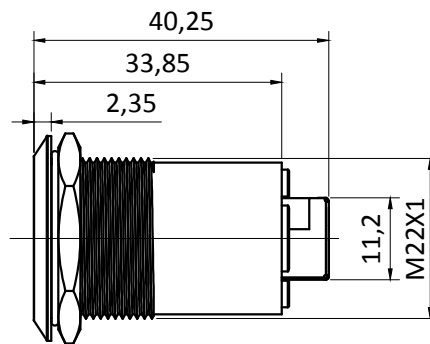
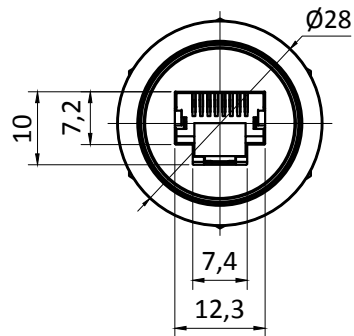
1-5: Dielectric Withstanding Voltage: 1000V AC

1-6: Operature Temperature: -40°C~80°C

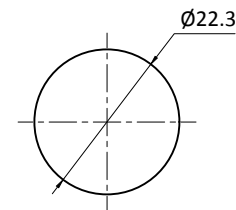
Soldering / Löttemperatur: 300° C max. for 5 seconds

Material:

Body / Gehäuse: Stainless Steel 304



“O”RING



Install size / Bohrbild
