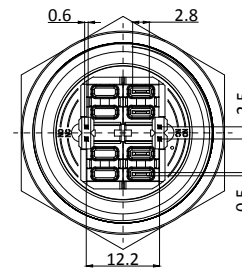
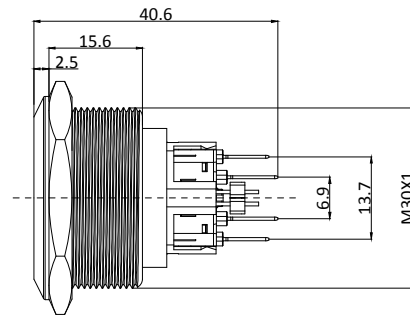
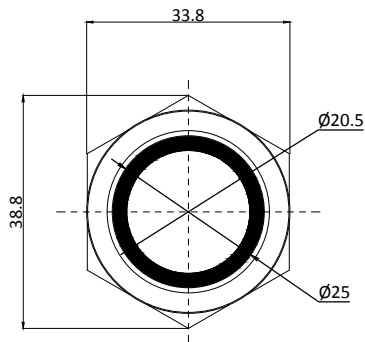
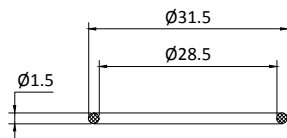


# P30-TF-RGB

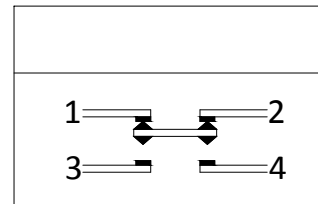


Rating / Schaltleistung: 5A 250VAC  
 Contact Resistance / Kontaktwiderstand: 50mΩ MAX(Initial value)  
 Insulation Resistance / Isolationswiderstand: 100MΩ 500VDC  
 Dielectric Strength / Spannungsfestigkeit: 1000VAC rms.  
 Electrical Life / Elektronische Lebensdauer: 100,000 Operations  
 Operating Temperature / Betriebstemperatur: -25 °C - +55 °C  
 Operating Pressure / Betätigungsdruck: 2 N ~ 5 N  
 Operating Stroke / Hub: 1.0mm ~ 6.0mm  
 Protection Grade / Schutzklasse: IP67  
 Soldering / Löttemperatur: 300°C max. for 5 seconds  
 Function / Funktion: OFF (ON)  
 Material:  
 Body / Gehäuse: Stainless Steel 304  
 Button / Drucktaste: Stainless Steel 316  
 Terminal / Anschluss: Wiring Terminal

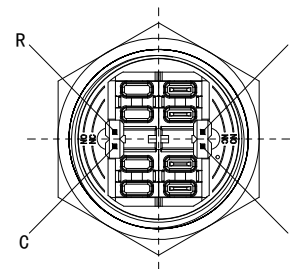
Lampenart /	Lamp Type	LED DC
Nennspannung /	Rated Voltage	6-24VDC
LED Farbe /	LED Color	R G B
Lebensdauer /	Life	40000hours
Schaltbild /		



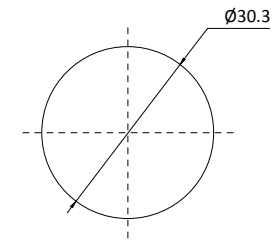
"O"RING



Kontaktart



Schaltkreis



Install size / Bohrbild
