

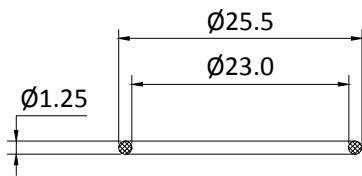
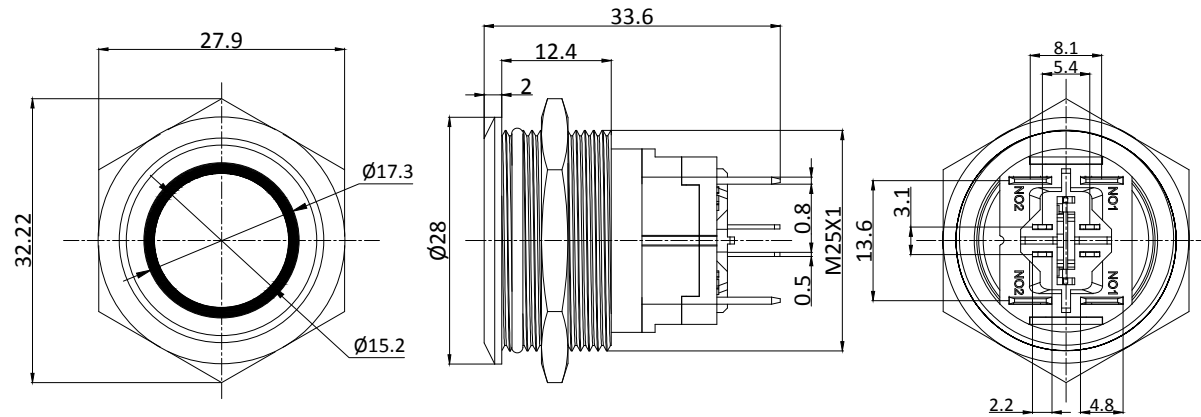
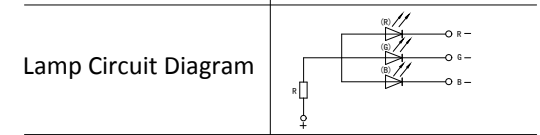
XP25-TF-RGB-2POL-15A

Rating / Schalteistung: 15A 250VAC
 Contact Resistance / Kontaktwiderstand: 50mΩ MAX(Initial value)
 Insulation Resistance / Isolationswiderstand: 100MΩ 500VDC
 Dielectric Strength / Spannungsfestigkeit: 2000VAC rms.
 Electrical Life / Elektronische Lebensdauer: 100,000 Operations
 Operating Temperature / Betriebstemperatur: -40 °C - +70 °C
 Protection Grade / Schutzklasse: IP67
 Soldering / Löttemperatur: 300°C max. for 5 seconds
 Material:

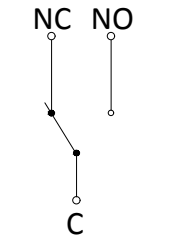
Body / Gehäuse: Aluminum anodizing black
 Button / Drucktaste: Aluminum anodizing black
 Terminal / Anschluss: Wiring Terminal

Lampenart /	Lamp Type	LED DC
Nennspannung /Rated Voltage		6-24VDC
LED Farbe /	LED Color	R G B
Lebensdauer /	Life	40000hours

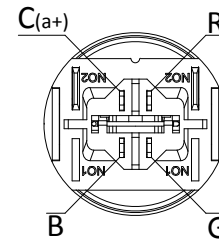
Schaltbild /



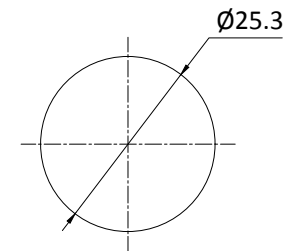
“O”RING



Kontaktart



Schaltkreis



Install size / Bohrbild
