

# P25-RF-RGB-POWER-15A

Rating / Schalteistung: 15A 250VAC  
 Contact Resistance / Kontaktwiderstand: 50mΩ MAX(Initial value)  
 Insulation Resistance / Isolationswiderstand: 100MΩ 500VDC  
 Dielectric Strength / Spannungsfestigkeit: 2000VAC rms.  
 Electrical Life / Elektronische Lebensdauer: 100,000 Operations  
 Operating Temperature / Betriebstemperatur: -40 °C - +70 °C  
 Protection Grade / Schutzklasse: IP67

Soldering / Löttemperatur: 300°C max. for 5 seconds

Material:

Body / Gehäuse: Stainless Steel 304

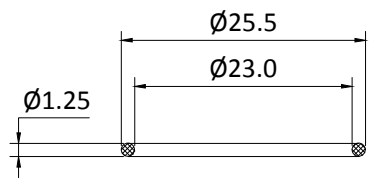
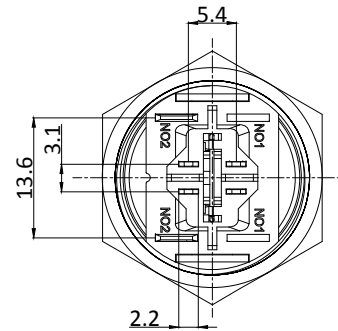
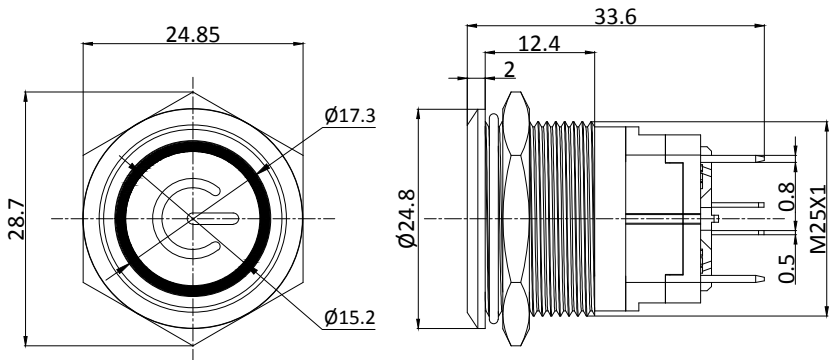
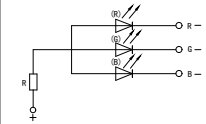
Button / Drucktaste: Stainless Steel 316

Terminal / Anschluss: Wiring Terminal

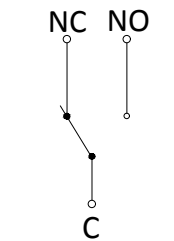
Lampenart /	Lamp Type	LED DC
Nennspannung / Rated Voltage		6-24VDC
LED Farbe /	LED Color	R G B
Lebensdauer /	Life	40000hours

Schaltbild /

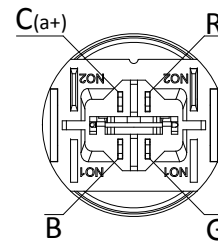
Lamp Circuit Diagram



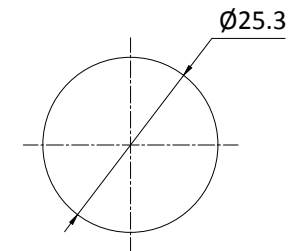
“O”RING



Kontaktart



Schaltkreis



Install size / Bohrbild
