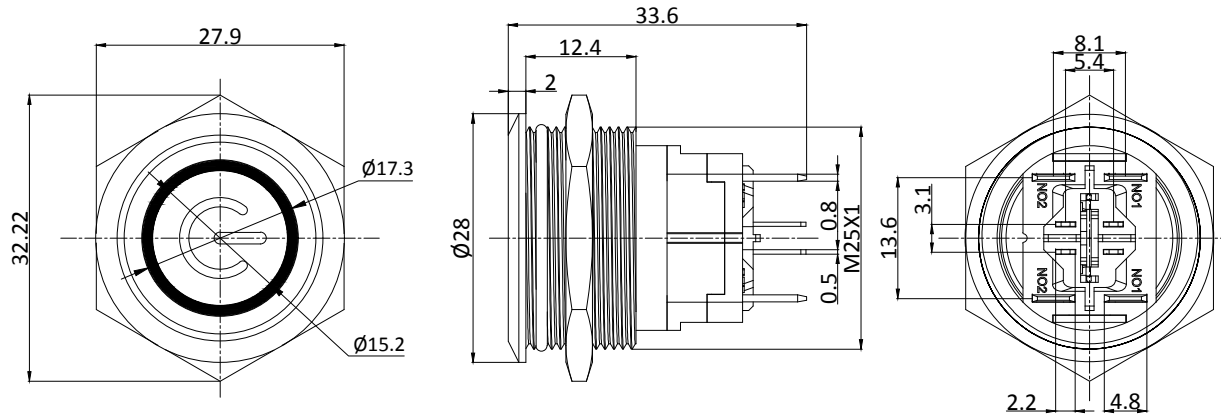


# P25-RF-RGB-2POL-POWER-15A



Rating / Schaltleistung: 15A 250VAC  
 Contact Resistance / Kontaktwiderstand: 50mΩ MAX(Initial value)  
 Insulation Resistance / Isolationswiderstand: 100MΩ 500VDC  
 Dielectric Strength / Spannungsfestigkeit: 2000VAC rms.  
 Electrical Life / Elektronische Lebensdauer: 100,000 Operations  
 Operating Temperature / Betriebstemperatur: -40 °C - +70 °C  
 Protection Grade / Schutzklasse: IP67

Soldering / Löttemperatur: 300°C max. for 5 seconds

Material:

Body / Gehäuse: Stainless Steel 304

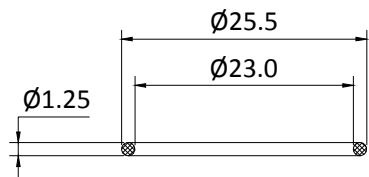
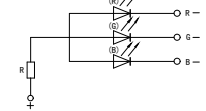
Button / Drucktaste: Stainless Steel 316

Terminal / Anschluss: Wiring Terminal

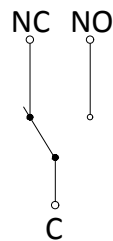
|                |               |            |
|----------------|---------------|------------|
| Lampenart /    | Lamp Type     | LED DC     |
| Nennspannung / | Rated Voltage | 6-24VDC    |
| LED Farbe /    | LED Color     | R G B      |
| Lebensdauer /  | Life          | 40000hours |

Schaltbild /

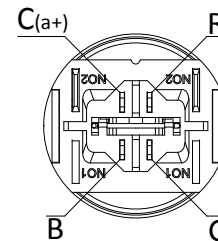
Lamp Circuit Diagram



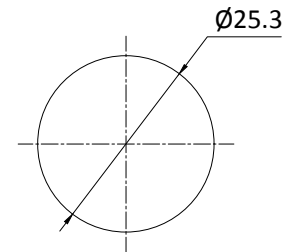
“O”RING



Kontaktart



Schaltkreis



Install size / Bohrbild

|  |  |  |  |  |
|--|--|--|--|--|
|  |  |  |  |  |
|  |  |  |  |  |
|  |  |  |  |  |
|  |  |  |  |  |