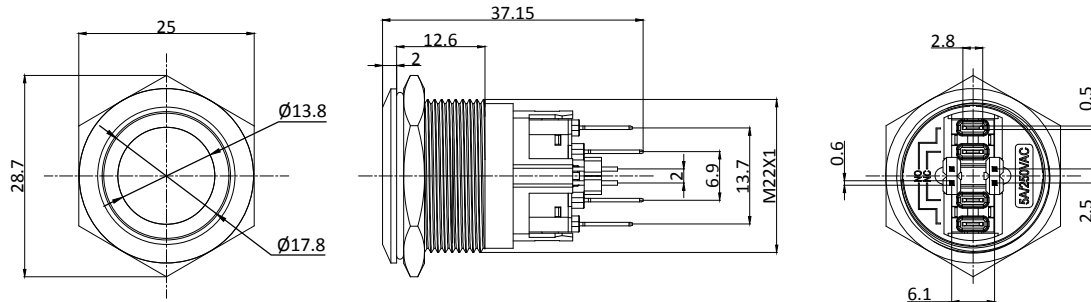


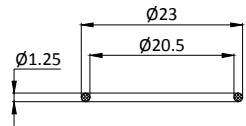
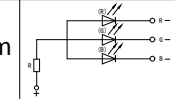
XP22-TF-RGB



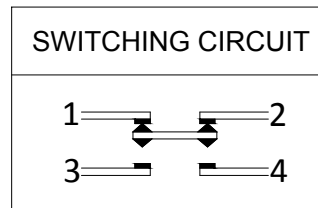
Rating / Schalteistung: 5A 250VAC
 Contact Resistance / Kontaktwiderstand: 50mΩ MAX(Initial value)
 Insulation Resistance / Isolationswiderstand: 100MΩ 500VDC
 Dielectric Strength / Spannungsfestigkeit: 1000VAC rms.
 Electrical Life / Elektronische Lebensdauer: 100,000 Operations
 Operating Temperature / Betriebstemperatur: -25 °C - +55 °C
 Operating Pressure / Betätigungsdruck: 2 N ~ 5 N
 Operating Stroke / Hub: 1.0mm ~ 6.0mm
 Protection Grade / Schutzklasse: IP67
 Soldering / Löttemperatur: 300°C max. for 5 seconds
 Function / Funktion: OFF (ON)
 Material:
 Body / Gehäuse: Aluminum anodizing black
 Button / Drucktaste: Aluminum anodizing black
 Terminal / Anschluss: Wiring Terminal

Lampenart /	Lamp Type	LED DC
Nennspannung /	Rated Voltage	6-24VDC
LED Farbe /	LED Color	R G B
Lebensdauer /	Life	40000hours

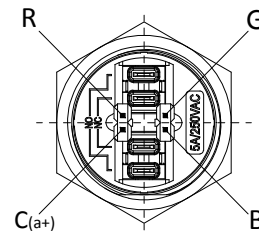
Lamp Circuit Diagram



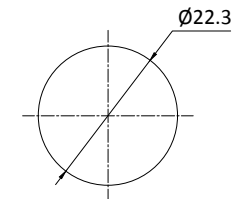
"O"RING



Kontaktart



Schaltkreis



Install size / Bohrbild
